

formlabs  | dental

Form 4B

Blazing Speed Meets Unmatched Accuracy

Fast

A model every 49 seconds

Versatile

15+ Formlabs and third-party resins

Intuitive

Anyone can learn in 15 minutes

Accurate

A perfect fit every time

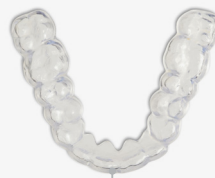
Unprecedented print speeds. Print a dental model every 49 seconds.



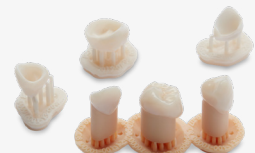
48 min
8 Surgical Guides



9 min
11 Clear Aligner Models

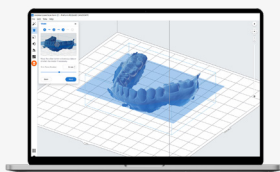


49 min
8 Splints



18 min
Over 100 crowns

Dentistry made easier through innovative solutions.



PreForm Dental

Go from scan to print in a few clicks with pre-optimized settings using our free print preparation software.



Auto-Dispense Resin Cartridge

A spillless cartridge with easy resin dispense simplifies resin handling for a hassle-free print process.



Build Platform Flex

Minimize interaction time and speed up part removal for a safer, easier, and more efficient 3D printing process.

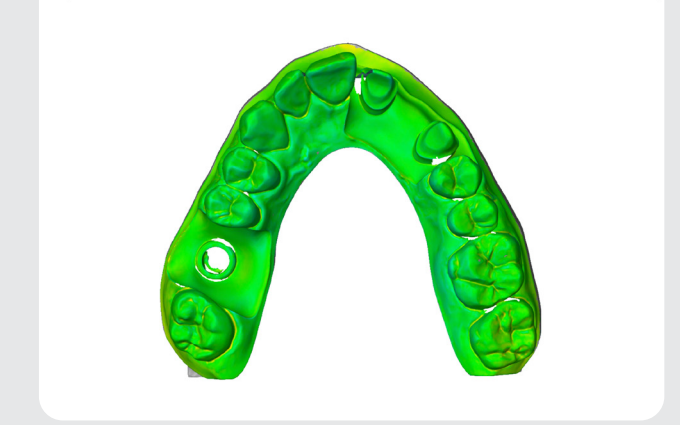


Effortlessly create parts for any dental application.

Choose from 15+ dental-specific resins including biocompatible resins developed and validated under a stringent QMS and produced in an ISO 13485-certified facility for peace of mind.

Achieve high-quality prints right out of the box with pre-optimized print settings.

Certified third-party materials and Open Platform available.



Unrivaled accuracy that matches your commitment to a perfect fit, every time.

Print dental parts with industry-leading surface accuracy of over 95% of data points within 50 µm of the original CAD data, consistent across the build platform.

Experience identical prints anywhere on the build platform powered by Formlabs Low Force Display™ (LFD) technology.

Smooth surfaces and fine features for premium looking parts you'll be proud to deliver.

Form 4B Tech Specs

Technology	Low Force Display™ (LFD)	
Build volume (W x D x H)	20.0 × 12.5 × 21.0 cm 7.9 × 4.9 × 8.3 in	
Layer thickness (Y resolution)	25 - 300 microns	
XY resolution	50 microns	
Average print speed	40 mm/h	
Maximum print speed	100 mm/h	
Resin Tank lifetime	75,000+ layers with any Formlabs material	
Printer weight	18.3 kg 40.4 lb	
Printer dimensions	39.8 × 36.7 × 55.4 cm 15.7 × 14.5 × 21.9 in	
Warranty and service	One-year warranty included Paid service and extended warranty options available	
Software compatibility	Windows 7 and up	Mac OS X 10.12 and up
File types accepted	STL, OBJ, 3MF	

Get in Touch

US +1 617 702 8476
sales@formlabs.com



REPRESENTED BY:
Alleghey Educational Systems, Inc.
320 East 3rd Avenue
Tarentum, PA 15084
Phone: 800-232-7600
www.allegheyedusys.com