



# SIMLOG

The Standard in Cost-Effective  
Simulation for Training Heavy  
Equipment Operators

Teach Heavy Equipment Operator  
Skills Safely and Affordably



# Personal Simulators for Logistics Programs

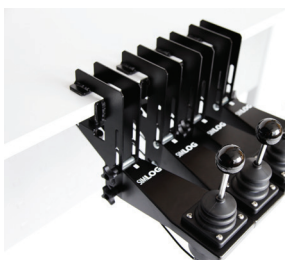


Rising workforce shortages in warehouses and distribution centers, due to accelerated e-commerce activity, are creating unprecedented demand for skilled lift truck operators. Simlog Personal Simulators for Logistics programs are designed to meet employers' training expectations in modern distribution and supply chain environments. The many cost-effective simulator setup options for both sit-down and stand-up lift truck training offer strategic possibilities for local industry workforce development. Alignment with national safety guidelines (OSHA), and industry recognized training standards such as National Safety Council, can be incorporated into CTE curricula for career exploration and skills development.

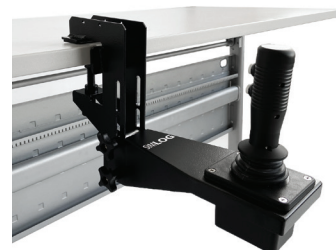
## Forklift Personal Simulator



## Unique Replica Controls for the Forklift Personal Simulator



Replica Control Ball  
Tip Levers



2-Button Forward/Neutral/Reverse  
Transmission Lever

## Reach Lift Truck Personal Simulator



## Industrial Controls with Two Options for OEM Control Handle



## Tabletop Replica Controls with Two Options for Joystick Orientation



# Personal Simulators for Construction Trades Programs



Infrastructure in the United States has suffered due to the pandemic, and demand for heavy equipment operators is projected to grow at an aggressive pace in the next decade. Simlog Personal Simulators for Construction trades programs have been instrumental in the creation of hundreds of new Heavy Equipment Operations (HEO) programs, including successful education-industry partnerships. Many cost-effective simulator setup options are offered to meet the training expectations of local employers with entry-level and more advanced equipment fleets. Alignment with industry recognized training standards such as NCCER, can be incorporated into CTE curricula for career exploration and skills development.

Simlog is at the forefront of affordable PC-based simulation with 16 Personal Simulators, consistently delivering exceptional skills development support for CTE programs since 1999.



Skid Steer Loader  
Personal Simulator



Backhoe Loader  
Personal Simulator



Wheel Loader  
Personal Simulator





Hydraulic Excavator  
Personal Simulator



Bulldozer  
Personal Simulator



Mobile Crane  
Personal Simulator



## Unique Replica Controls for Simlog Personal Simulators



8-push button Replica Control  
Joysticks used for Simlog's  
Construction Products



Replica Controls Two-Pedal Unit with  
toe-down/heal down action of a real  
Hydraulic Excavator



2-Button Forward/Neutral/Reverse  
Transmission Lever, used for  
Forklift, Backhoe Loader, and  
Wheel Loader Personal Simulators

# Why Choose Simlog? Unique Multi-Purposing!

- ▶ Many Personal Simulators share the same Simulator Controls to create the most cost-effective setup
- ▶ Multi-Purpose Personal Simulator configurations are available for both Tabletop Replica Controls and Simlog Operator Chair setups



You can even combine Personal Simulators for both Logistics and Construction trades programs, as shown here.

## Key Features

- ▶ World class simulation graphics and physics
- ▶ Instructional Designs aligned with leading training standards
- ▶ Simulation Modules of increasing difficulty, to develop key component skills one at a time
- ▶ Unique Performance Indicators to evaluate the simulated work, with automatic performance tracking
- ▶ Variety of simulator controls, from simple Tabletop Replica Controls to Operator Chairs
- ▶ Simulator controls are multi-purpose, shared by different simulation software programs
- ▶ Simulator controls are USB-ready, making installation and maintenance easy
- ▶ Use just one, or up to four displays for a full-surround experience (3 in front, 1 behind)
- ▶ Cost-effective setup options
- ▶ Low total cost of ownership

# Discover Success Stories using Simlog Personal Simulators

Simlog Personal Simulators have been delivering cost-effective training simulation to education and industry since 1999. Today, our Personal Simulators are used in over 500 vocational programs across the U.S.A. and Canada. Our products have helped place hundreds of thousands of students around the world on a pathway to becoming superior heavy equipment operators.

## Ocean County Vocational Technical School, New Jersey

Ocean County Vocational Technical School (OCVTS) created a Heavy Equipment Operator (HEO) program in 2020 that combines a strong advisory relationship with local heavy highway construction and paving contractors, along with sponsorship by a sister school district in New Jersey (Hunterdon County) for NCCER credentialing.

The simulator lab consists of 17 multi-purposed stations for operator training, with an emphasis on Skid Steer Loader for entry-level equipment operation, along with Backhoe Loader, Hydraulic Excavator, Bulldozer, Wheel Loader and Forklift Personal Simulators. There are 15 Tabletop stations with Replica Controls and single displays, and 2 Operator Chair stations with four surround displays. The HEO program is delivered during the day and evening, with strong hands-on apprenticeship training through local employers.



## Hunterdon County Polytech Career & Technical School, New Jersey

Opened in 2018, the Hunterdon Country Polytech Heavy Equipment Operator Program (HEOP) is the first of its kind in New Jersey, combining hands-on skills training with Simlog Personal Simulators, and classroom instruction utilizing NCCER's Heavy Equipment Operations (HEO) curriculum. The HEOP is offered as a two-year high school program, and an adult (evening) apprenticeship training program.

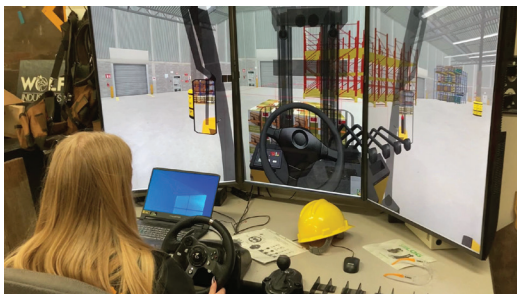
The simulator lab consists of nine multi-purposed stations with Forklift, Backhoe Loader, Hydraulic Excavator, Bulldozer and Wheel Loader Personal Simulators. These are eight Tabletop stations with Replica Controls, and one Operator Chair station with Industrial Controls and full-surround displays.



## Vancouver Public Schools, Washington

Vancouver Public Schools (VPS) deployed Simlog Forklift Personal Simulators into existing CTE programs at four VPS high schools in 2021. Each school received a single Tabletop Forklift simulator setup with Replica Controls and multiple displays, providing cost-effective and compact simulator setups that could be adapted to varying classroom environments.

In January 2022, students began simulator-based training for skills development. Fifteen graduating students, reaching the age of 18, were selected to participate in a one-day OSHA and forklift operator certification course offered through a private local training company, with everyone earning their credentials at the end of the school year.





**REPRESENTED BY:**  
Alleghey Educational Systems, Inc.  
320 East 3rd Avenue  
Tarentum, PA 15084  
Phone: 800-232-7600  
[www.allegheyedusys.com](http://www.allegheyedusys.com)

# SIMLOG

Contact us to learn about  
the Reseller nearest you,  
obtain a personalized quotation  
or schedule a Virtual Visit

Toll Free Number:  
1-888-774-6564

[www.simlog.com](http://www.simlog.com)

