

Roland TruVis SG/VG EXTENDED SHUTDOWN REQUIREMENTS

TO DO before leaving your Roland Printer/Cutter Unattended for an extended break (more than 2 weeks)

1. The Roland vinyl printer/cutter machines are precise devices that **require proper care in order to maintain accuracy and functionality** – which includes performing a **head wash procedure** during extended downtime.
2. Be sure to have at least the minimum number of **cleaning cartridges** necessary to perform the head wash and to re-ink the machine when you return in the Fall.
 - SG Series – 2 Cartridges, Part Number: TR-CL
 - SG2 Series - 2 Cartridges, Part Number: TR2-CL
 - VG Series (4-Color) – 2 Cartridges, Part Number: TR2 – CL
 - VG Series (7 and 8 Color) – 4 Cartridges, Part Number: TR2-CL (GROUP A and B must be done separately in order to only use four cartridges)
 - VG2 Series (7 and 8 Color) – 4 Cartridges, Part Number: TR2-CL (GROUP A and B must be done separately in order to only use four cartridges)
1. Be sure to **empty your drain bottle** prior to starting the process. Removing ink from the lines does use a significant amount of drain space, and the bottle cannot be emptied during the head wash process.
2. Be sure to dispose of your drain bottle/cartridges properly, adhering to local guidelines.

PERFORM A HEAD WASH PROCEDURE:

1. Follow the instructions on the next page to **perform a head wash on your printer**.
2. The process does take time, so give yourself an hour or two to complete the procedure. The overall time will depend on your machine model and dedicated time in front of the unit.
3. After the head wash is complete, **store your ink cartridges on a level surface**, and within a regulated temperature/humidity environment.
4. Remove any media from the roller, cover any open media rolls to prevent dust buildup.
5. Turn off the printer's Sub Power and Main Power Switch on the back of the Printer.
6. Unplug the Printer.

Please remember that **failure to do a head wash will cause ink-build up in the system and could cause problems when returning in the Fall or shortly thereafter**. These storage related issues may not be covered under your machines warranty/extended warranty

If you have any questions regarding this process, you can email support@alleghenyedusys.com, or call us at 800-232-7600.

Please put a copy of these instructions with the machine as a reminder.
This will help avoid extra repairs, service calls, jams, malfunctions, and other performance issues.



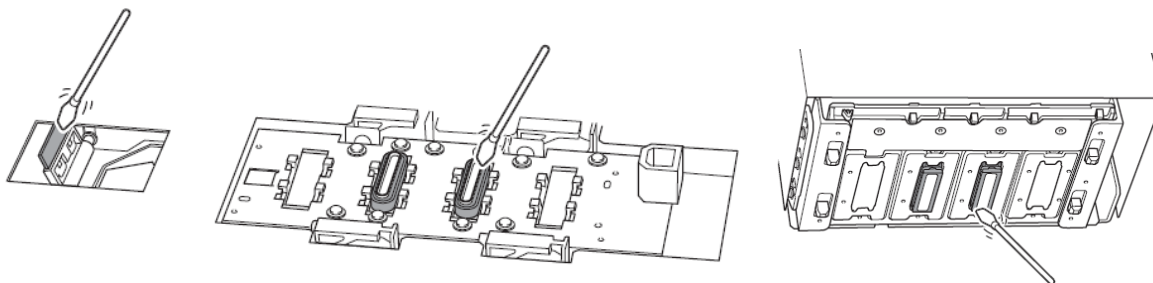
SG-Series Head Wash

Notice: All ink is discharged during this operation. This procedure should only be performed by, or under the guidance of an authorized Roland service agent.

Before You Begin

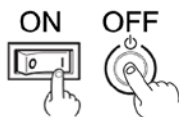
This procedure will require two (2) TR-CL cleaning cartridges and will take approximately 1 hour.

Perform a manual cleaning and replace worn consumables such as wipers. See User Manual.



Entering Service Mode

1. Turn the main power on and the Sub Power off.



2. Using the arrow keys enter the sequence below:



3. Now press and hold down the Left, Down, and Right arrow keys while pressing the Sub Power key. The machine will power on in Service Mode and display the SETUP prompt.





Performing Head Wash

1. From the SETUP prompt press [MENU]



2. Press the left arrow key to enter the service menu. Press the down arrow key until SUB MENU appears. Press the left arrow to enter the SUB MENU.



3. Press the left arrow to enter the SUB MENU. Press the down arrow until HEAD WASH appears.



4. Press [ENTER] to begin the head wash process.



5. Empty drain bottle when prompted and press [ENTER]. **DO NOT SKIP THIS STEP**



6. When prompted to [REMOVE CARTRIDGE 1,2,3,4]. Remove all 4 cartridges.



7. Replace any two ink pouches with the TR-CL cleaning liquid pouches.

8. When prompted to [SET CL-LIQUID 1, 3] insert the TR-CL pouches you prepared earlier into slots 1 and 3.





9. When prompted to [REMOVE CL-LIQUID 1 3] pull the 2 TR-CL pouches out just enough to disengage. You do not have to completely remove the ink trays.

REMOVE CL-LIQUID
1 3



10. When prompted to [SET CL-LIQUID 1, 3]. Gently push the ink trays back into place until they engage. The [WASHING HEAD] prompt will display. This process will repeat between 3 and 7 times.

SET CL-LIQUID
1 3



WASHING HEAD.....

11. Once the ink lines for channels 1 and 3 have been cleaned, the LCD display will prompt you to move the ink trays currently in channels 1 and 3 to channels 2 and 4 which are the MG and BK channels. The same series of prompts will display for channels 2 and 4 that occurred for channels 1 and 3.

SET CL-LIQUID
2 4

WASHING HEAD.....

REMOVE CL-LIQUID
2 4

12. At the end of the process you will be prompted to [REMOVE CL-LIQUID 2, 4] and to again [EMPTY DRAIN BOTTLE] **DO NOT SKIP THIS STEP**. Empty the drain bottle and press [ENTER].

REMOVE CL-LIQUID
2 4

EMPTY
DRAIN BOTTLE



13. The LCD display will default back to the [SUB MENU/HEAD WASH] prompt. **DO NOT PRESS ENTER**. Turn off the sub power on the control panel as well as the main power at the rear of the machine. The HEAD WASH process has now been completed.

SUB MENU
HEAD WASH



Please consult the applicable setup guide when returning the printer to service.