

cef

www.cefinc.com

THE QUAD POD

CREATE YOUR SPACE

The Quad Pod table by CEF is a revolutionary concept in educational furniture design! This design concept allows you to customize your table according to the storage and functionality needs that you may have in a makerspace or classroom. CEF has designed four different square "pods" that allow for storage, a trash bin, device charging & storage or storage with bins. You can mix & match the pods, or have all four pods identical-your choice! These four pods drop into a metal frame on casters that form a sturdy base for a 48x48 butcher block top that secures to the pods, thus creating the most flexible and ingenious collaborative table around!



Available in 34" Height



Finish Choices:



It's Really Simple:
Choose your four cabinets. Customize to your needs!
Mix & match or all the same. Your choice.
(Only one trash pod per table please)

PICK A Pod!

BASIC ADJUSTABLE SHELF STORAGE
2 SHELVES INCLUDED



STORAGE BINS
3 BINS W/LIDS



10-15 SLOT DEVICE
STORAGE & CHARGING



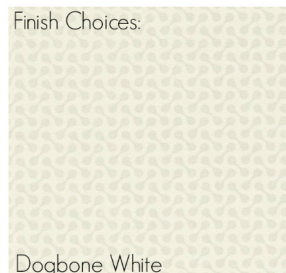
TRASH BIN
(GROMMET HOLE IN TABLETOP)



THE QUAD POD
CREATE YOUR SPACE

PICK A FINISH!
(SHOWN IN FOLKSTONE HEX)

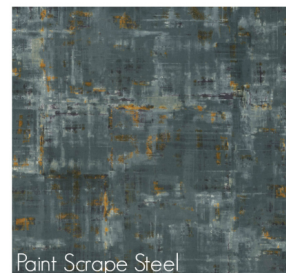
Finish Choices:



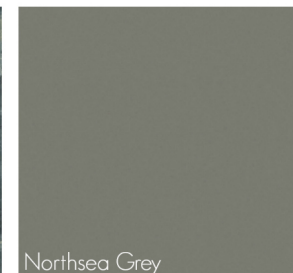
Dogbone White



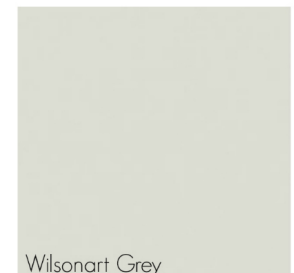
Folkstone Hex



Paint Scrape Steel



Northsea Grey



Wilsonart Grey